

# EMERGENCY DEPARTMENT THORACOTOMY (EDT)

 *Also known as a Resuscitative Thoracotomy*

## Indications:

- Penetrating chest injury with witnessed cardiac arrest
- Pericardial tamponade requiring evacuation
- Massive intrathoracic bleeding
- Bilateral chest decompression without ROSC  
(return of spontaneous circulation)

## What is needed?

- ♥ Crash cart
- ♥ Internal defib paddles (begin with 20 joules and ↑ to 40-50 joules)
- ♥ Level 1 infuser
- ♥ Thoracotomy tray with additions (found in trauma tower)
- ♥ Blood cooler/MTP activation
- ♥ Sterile gowns and gloves
- ♥ Proiodine solution
- ♥ Sterile yankauer
- ♥ Cardiothoracic Surgeon

## PEARLS:

Survival is much lower with blunt chest trauma.

Airway control is strongly advised

***Death = 30 minutes without ROSC and temperature > 33°C***

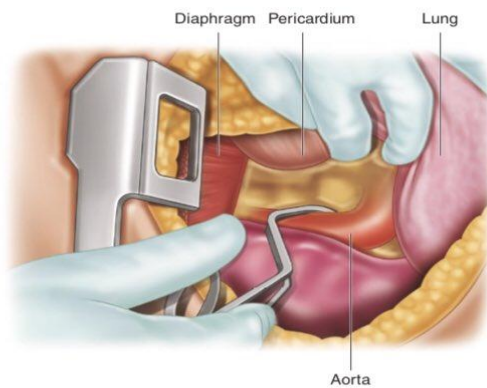


Fig. 2.3 Clamping the aorta

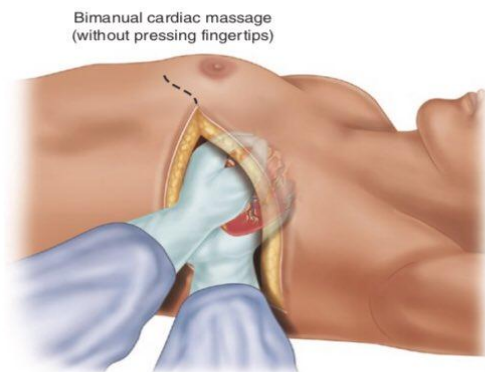
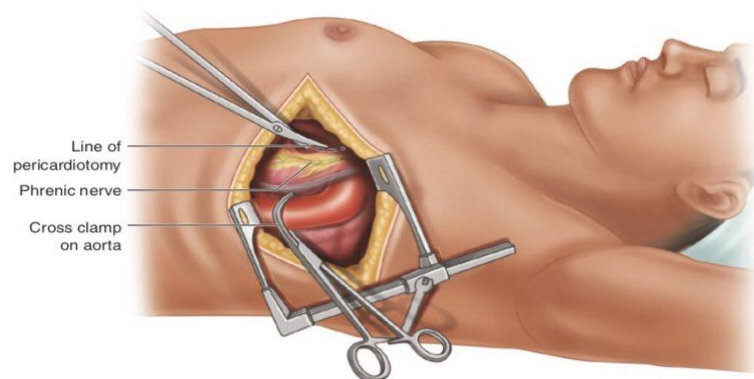


Fig. 2.5 Cardiac massage—notice two hands

Fig. 2.4 Opening the pericardium



Google Images

## **References:**

1. Emergency Nurses Association (ENA), Trauma Nursing Core Course Provider Manual 7<sup>th</sup> Ed.,2014, 142-143.
2. American College of Surgeons, Advanced Trauma Life Support, Student Course Manual 10<sup>th</sup> Ed. Chapter 4, pg. 71.