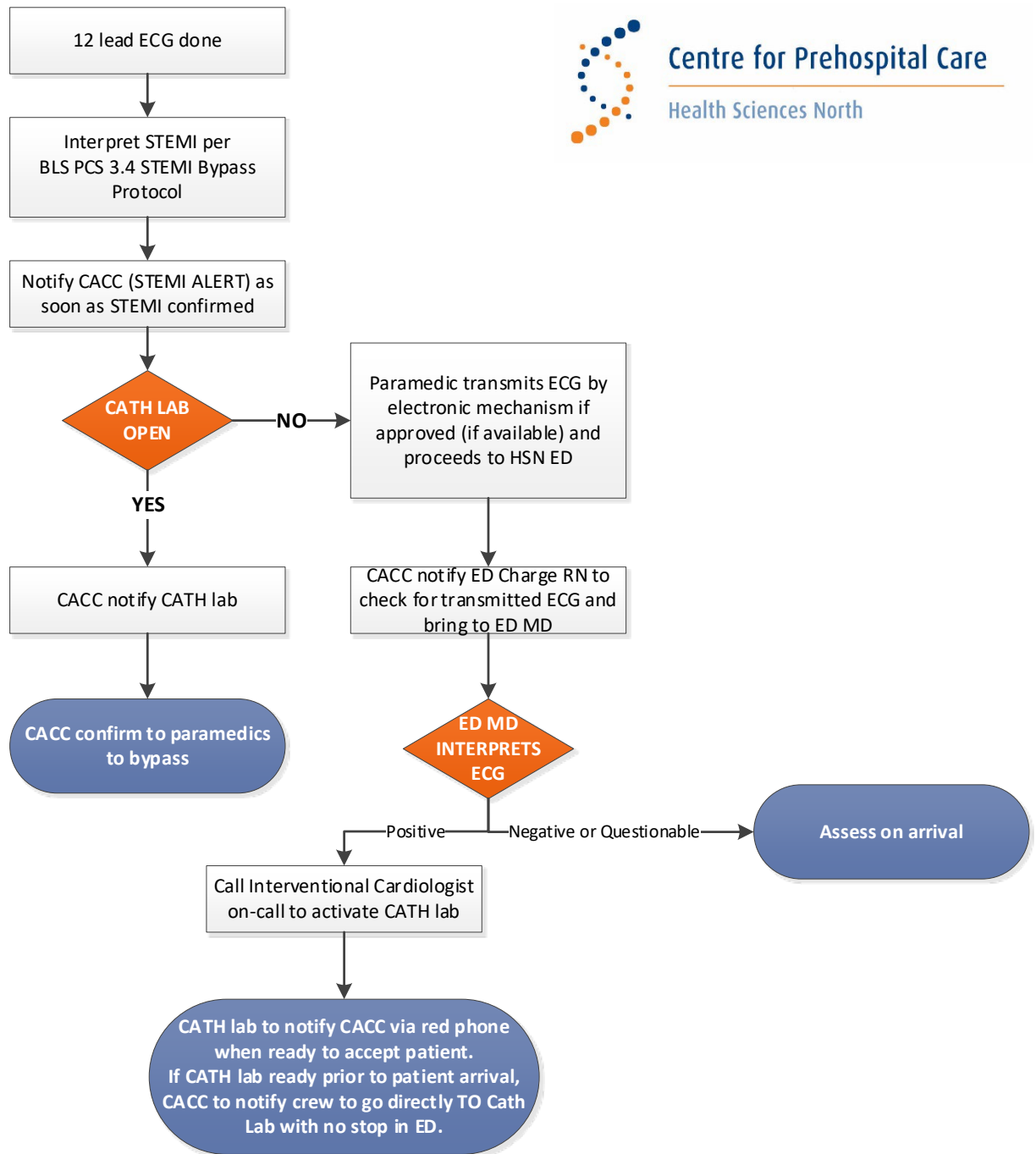


STEMI TRIAGE GUIDELINES ≤60 MINUTES TO PCI CENTRE



Centre for Prehospital Care

Health Sciences North



HSN Cardiac Catheterization Laboratory is located at the Ramsey Lake site at the Centre Tower on the 3rd floor.

Regular Hours:

Monday-Friday from 0800-1700

After Hours:

Friday Evening, Saturday and Sunday – Staff are on call

*Note: Patients cannot proceed to the Cath Lab if weight exceeds 550lbs (249kg)

DOCUMENT

Document

Program/Service Area: Centre for Prehospital Care

Issue Date: April 27, 2018

Last Revised Date: November, 2023

Update Schedule: Annually